

Schau ins Land

Welcome to Bensberg



Schau ins Land



Arrive



Furnishing example living/dining area



Furnishing example bedroom

Feel good

Enjoy



Furnishing example living/dining area



Relax

Furnishing example main bathroom

Dream homes

The following highlights await you in the apartment WE3

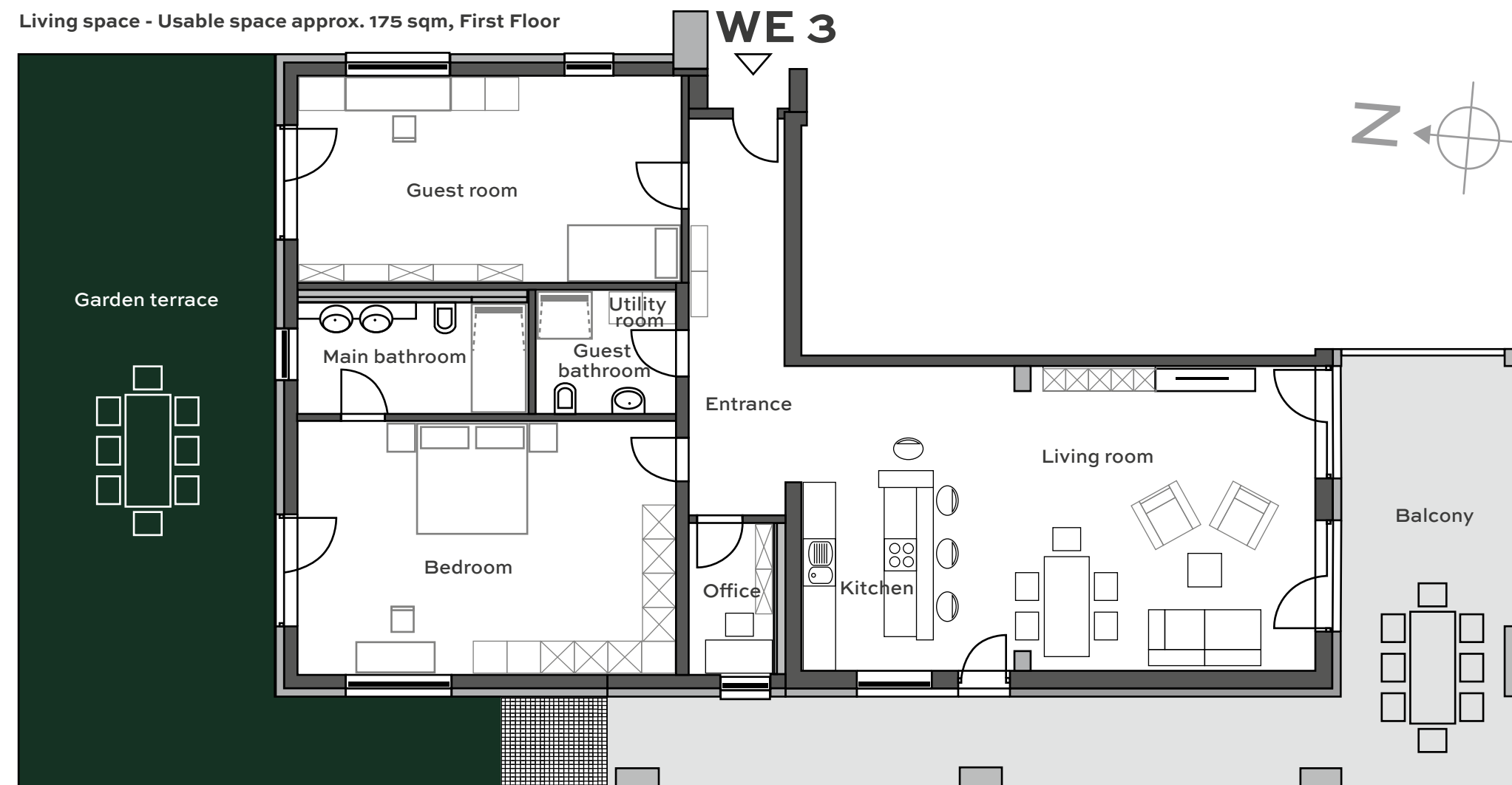
- unique view of the Siebengebirge
- spacious south and west terrace with a transition to the garden
- electric sun awnings
- rear garden terrace
- main bathroom en suite
- particularly generous cellar/multi-purpose room
- XXL covered parking space

Other features:

- Real oak wood parquet in living and sleeping areas
- High-quality equipped bathrooms with spacious, floor-level shower
- Modern wall treatment with painter's fleece and paint
- Underfloor heating with individual room regulations, including photovoltaic system
- Freshwater station per apartment
- High-quality, threshold-free windows with multiple safety glazing
- Electric roller shutters in all rooms
- Elevator to all floors
- Security concepts incl. video surveillance and 2-meter high walls to the street side
- Media cabinet with the latest CAT cables and fiber optic connection
- and much more

Furnishing example workspace

Living space - Usable space approx. 175 sqm, First Floor



Floor plan



SIL 11 GmbH & Co.KG
Boysenstraße 6
25980 Sylt / OT Westerland
Germany
Tel.: +49 4651 9818-19
Fax: +49 4651 9818-18

Contact person
Kai Schmidt
Mobile: +49 170 6682280